

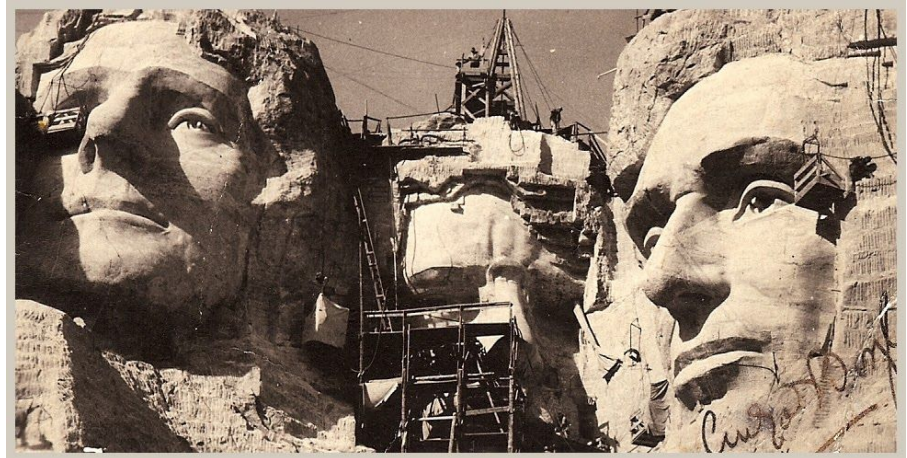
MORRIS JUMEL MANSION

WINTER LECTURE SERIES

Presidential History Lecture

Out of Rushmore's Shadow with Lou Del Bianco | Thursday, February 13th, 7PM

The Morris-Jumel Mansion welcomes storyteller Lou Del Bianco, as he shares the story of his grandfather, Luigi Del Bianco, chief carver of our nation's greatest memorial, Mount Rushmore. Using primary source documents to bring his grandfather's story to life, Del Bianco's presentation discusses the monument's relation to



American, presidential, and immigrant history. Lou Del Bianco's book, *Out of Rushmore's Shadow*, detailing Luigi's story and posthumous recognition of his talents, has been featured on CBS Sunday Morning and will be for sale in the museum gift shop after the presentation.

Black History Month Lecture

Harlem Architecture: Colonial & Modernism with John Reddick | Thursday, February 27th, 7PM



PRESENTED AS A PART OF THE HARLEM RENAISSANCE 100 CELEBRATION

In this engaging lecture, architect and historian John Reddick will explore the colonial aesthetic in Harlem's early "modern" architecture and consider how it served as a backdrop to the Jazz Age. Reddick will discuss select local early Twentieth-Century designs such as the Roger Morris Apartments and the Colonial Park & Pool, and examine the work of African American architect,

Vertner Tandy. Tandy is known for his design of Madame Walker's residence on 136th Street, which was commonly referred to during the Harlem Renaissance as the "Dark Tower."

MORRIS JUMEL MANSION

WINTER LECTURE SERIES

Women's History Month Lecture

Two Elizas in Old New York (1875): Eliza Greatorex - Picturing Eliza Jumel's Mansion with
Professor Katherine Manthorne | Thursday, March 12th, 7PM



Join Professor Katherine Manthorne as she explores the interconnected lives of two influential women from 19th Century New York, Eliza Jumel and Eliza Pratt Greatorex. Eliza Jumel, a self-made woman who used her intellect to become one of the richest women in New York, was the mansion's longest living resident. Four years after Jumel's death, Eliza Pratt Greatorex was one of America's most famous women artists and only female member of the National Academy of Design. Professor Manthorne's illustrated presentation focuses on Pratt Greatorex's folio volume *Old New York: From the Battery to Bloomingdale* (1875) in which the artist depicted the city's threatened architectural landmarks during the post-Civil War building boom, including Morris-Jumel Mansion and its grounds. Enjoy this special preview of Manthorne's forthcoming book, *Restless Enterprise: The Art and Life of Eliza Pratt Greatorex*, which will be published in January 2021.

**All lectures are free, with limited seating.
Visit morrisjumel.org to reserve your seat.**